

- - 5/8" IRON PIN SET (I.D. GUTOSKEY PS 7567)
- - 5/8" IRON PIN IN MON. BOX FOUND, & USED (UNLESS NOTED)
- - MONUMENT FOUND AS NOTED
- - 5/8" IRON PIN SET IN MON. BOX (I.D. GUTOSKEY PS 7567)
- - 5/8" IRON PIN SET IN CONC. (I.D. GUTOSKEY PS 7567)

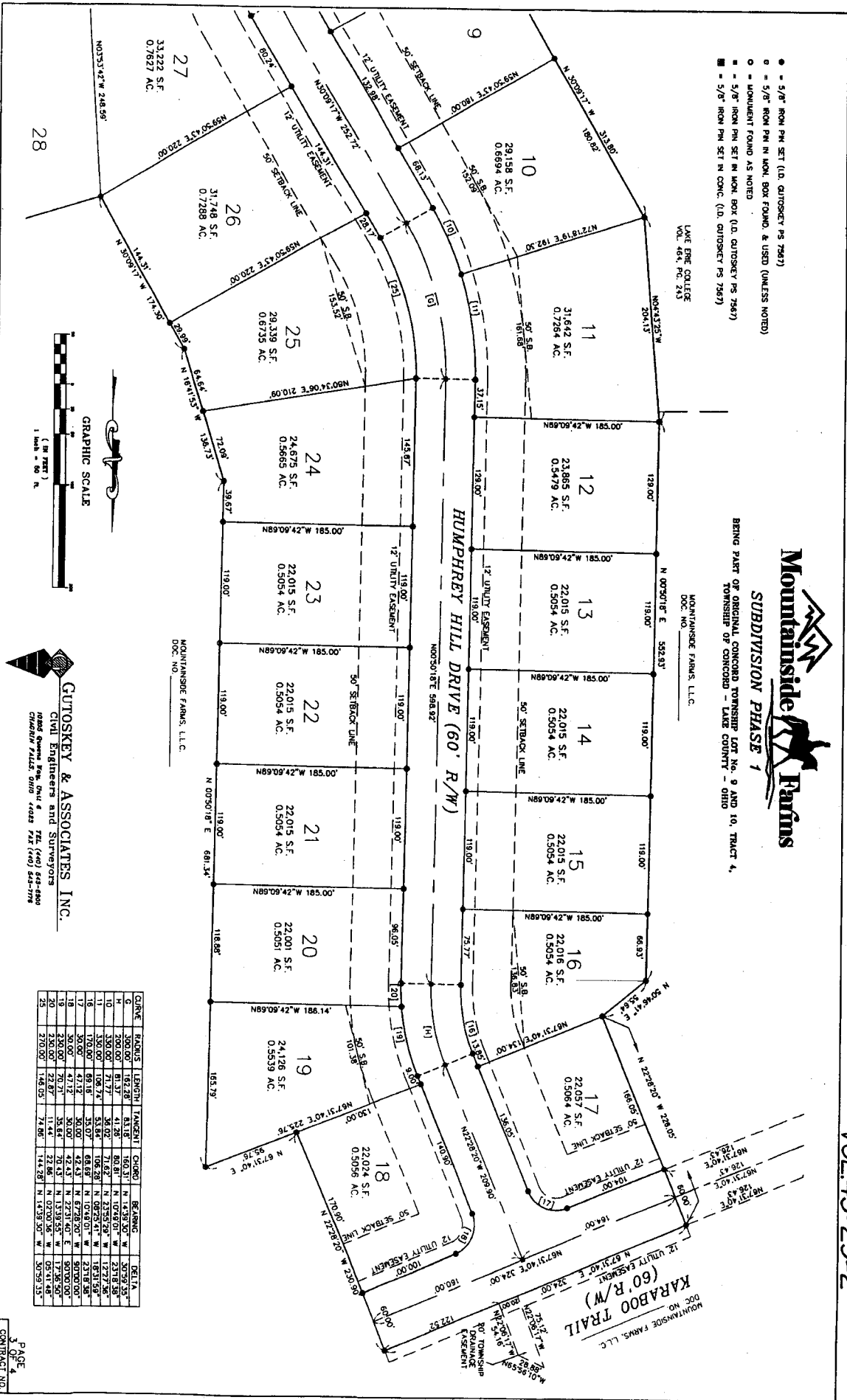
LAKE BURE COLLEGE
VOL. 464, PG. 743

MOUNTAINSIDE FARMS, L.L.C.
DOC. NO. _____

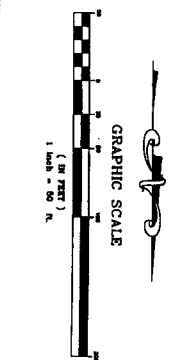
BEING PART OF ORIGINAL CONCORD TOWNSHIP LOT No. 9 AND 10, TRACT 4,
TOWNSHIP OF CONCORD - LAKE COUNTY - OHIO

MountainSide Farms

SUBDIVISION PHASE 1



MOUNTAINSIDE FARMS, L.L.C.
DOC. NO. _____



GUTOSKEY & ASSOCIATES, INC.
Civil Engineers and Surveyors
10855 Geneva Pike, Suite # 4404
Chardon Falls Ohio 44024
Phone: (440) 284-4440
Fax: (440) 284-3778

LINE	RADIUS	LENGTH	TANGENT	CHORD	BEARING	DELTA
G	300.00'	152.28'	81.18'	160.31'	N 14.38.50" W	307.69° 35'
H	200.00'	91.37'	48.26'	90.81'	N 10°40'00" W	231°8'35"
I	350.00'	171.72'	94.02'	171.82'	N 23°52'29" W	122°7'56"
J	350.00'	171.72'	94.02'	171.82'	N 10°22'01" W	167°1'59"
K	170.00'	86.16'	47.07'	86.68'	N 10°22'01" W	167°1'59"
L	300.00'	152.28'	81.18'	160.31'	N 14.38.50" W	307.69° 35'
M	300.00'	152.28'	81.18'	160.31'	N 14.38.50" W	307.69° 35'
N	300.00'	152.28'	81.18'	160.31'	N 14.38.50" W	307.69° 35'
O	300.00'	152.28'	81.18'	160.31'	N 14.38.50" W	307.69° 35'
P	300.00'	152.28'	81.18'	160.31'	N 14.38.50" W	307.69° 35'
Q	300.00'	152.28'	81.18'	160.31'	N 14.38.50" W	307.69° 35'
R	300.00'	152.28'	81.18'	160.31'	N 14.38.50" W	307.69° 35'
S	300.00'	152.28'	81.18'	160.31'	N 14.38.50" W	307.69° 35'
T	300.00'	152.28'	81.18'	160.31'	N 14.38.50" W	307.69° 35'
U	300.00'	152.28'	81.18'	160.31'	N 14.38.50" W	307.69° 35'
V	300.00'	152.28'	81.18'	160.31'	N 14.38.50" W	307.69° 35'
W	300.00'	152.28'	81.18'	160.31'	N 14.38.50" W	307.69° 35'
X	300.00'	152.28'	81.18'	160.31'	N 14.38.50" W	307.69° 35'
Y	300.00'	152.28'	81.18'	160.31'	N 14.38.50" W	307.69° 35'
Z	300.00'	152.28'	81.18'	160.31'	N 14.38.50" W	307.69° 35'

TWP. LOT 15
TWP. LOT 9

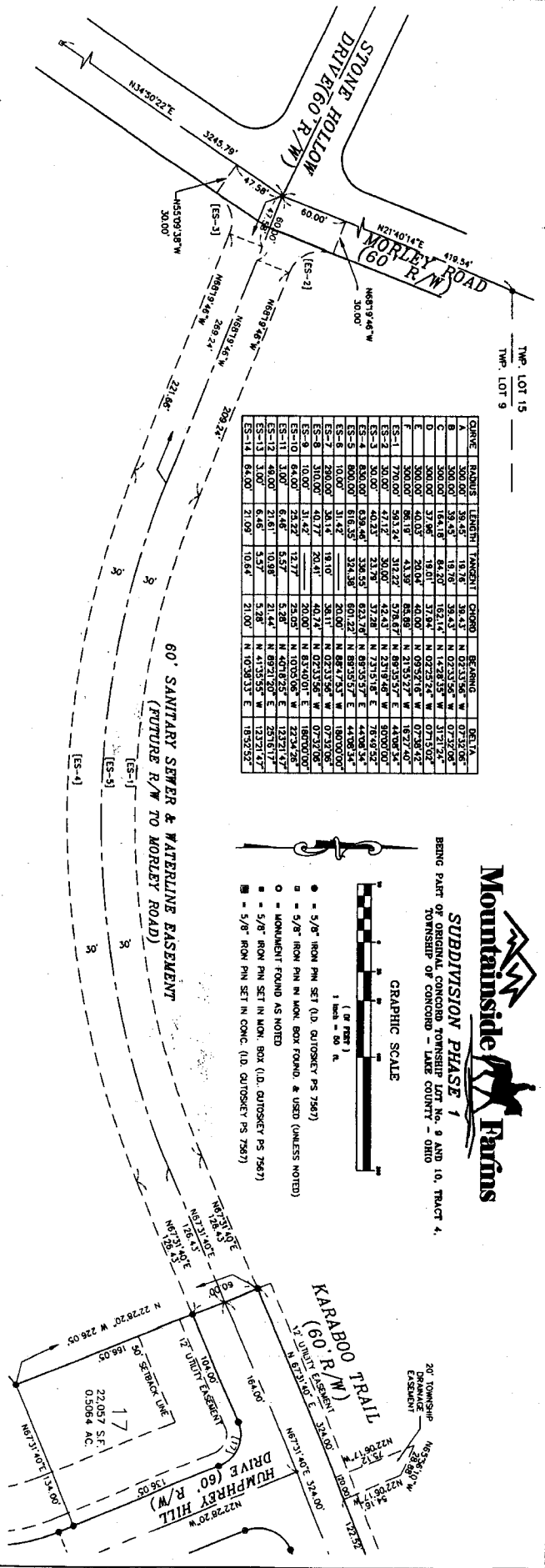
CURVE	RADIUS	LENGTH	TANGENT	CHORD	BEARING	DELTA
A	300.00	38.43	18.76	38.43	N 02°13'56" W	07°12'00"
B	300.00	164.18	84.07	164.14	N 14°28'25" W	31°21'24"
C	300.00	37.96	19.01	37.94	N 02°25'24" W	07°15'02"
D	300.00	40.03	20.04	40.00	N 09°52'01" W	07°38'42"
E	300.00	80.19	40.09	80.00	N 21°55'27" W	18°21'40"
ES-1	300.00	31.42	15.71	31.42	N 02°13'56" W	07°12'00"
ES-2	300.00	31.42	15.71	31.42	N 02°13'56" W	07°12'00"
ES-3	300.00	31.42	15.71	31.42	N 02°13'56" W	07°12'00"
ES-4	300.00	31.42	15.71	31.42	N 02°13'56" W	07°12'00"
ES-5	300.00	31.42	15.71	31.42	N 02°13'56" W	07°12'00"
ES-6	300.00	31.42	15.71	31.42	N 02°13'56" W	07°12'00"
ES-7	300.00	31.42	15.71	31.42	N 02°13'56" W	07°12'00"
ES-8	300.00	31.42	15.71	31.42	N 02°13'56" W	07°12'00"
ES-9	300.00	31.42	15.71	31.42	N 02°13'56" W	07°12'00"
ES-10	300.00	31.42	15.71	31.42	N 02°13'56" W	07°12'00"
ES-11	300.00	31.42	15.71	31.42	N 02°13'56" W	07°12'00"
ES-12	300.00	31.42	15.71	31.42	N 02°13'56" W	07°12'00"
ES-13	300.00	31.42	15.71	31.42	N 02°13'56" W	07°12'00"
ES-14	300.00	31.42	15.71	31.42	N 02°13'56" W	07°12'00"



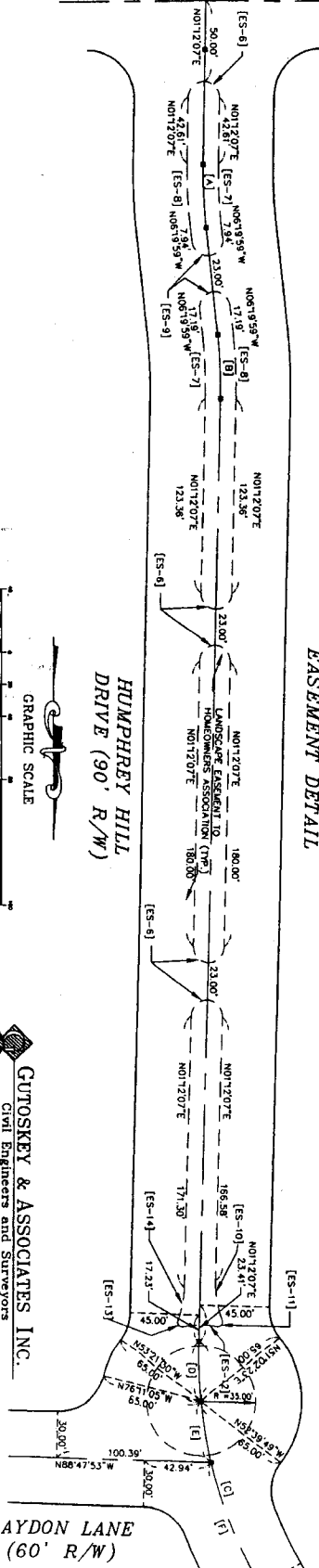
SUBDIVISION PHASE 1
BEING PART OF ORIGINAL CONCORDED TOWNSHIP LOT NO. 9 AND 10, TRACT 4,
TOWNSHIP OF CONCORD - LAKE COUNTY - OHIO

GRAPHIC SCALE
(1" = 60' F.T.)
1 Inch = 60 Ft.

- 5/8" IRON PIN SET (I.D. GUTOSKEY PS 7967)
- 5/8" IRON PIN IN MON. BOX FOUND, & USED (UNLESS NOTED)
- MONUMENT FOUND AS NOTED
- 5/8" IRON PIN SET IN MON. BOX (I.D. GUTOSKEY PS 7967)
- 5/8" IRON PIN SET IN CONC. (I.D. GUTOSKEY PS 7967)



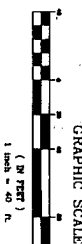
PINECREST ROAD (60' R/W)



INTERSECTION AND
EASEMENT DETAIL

HUMPHREY HILL
DRIVE (90' R/W)

LAYDON LANE
(60' R/W)



GUTOSKEY & ASSOCIATES, INC.
Civil Engineers and Surveyors
One Queen Pike, Suite # 704 (409) 544-8000
CINCINNATI, OHIO 45203 FAX (410) 544-7178