





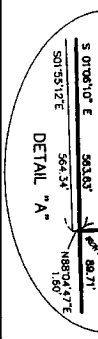
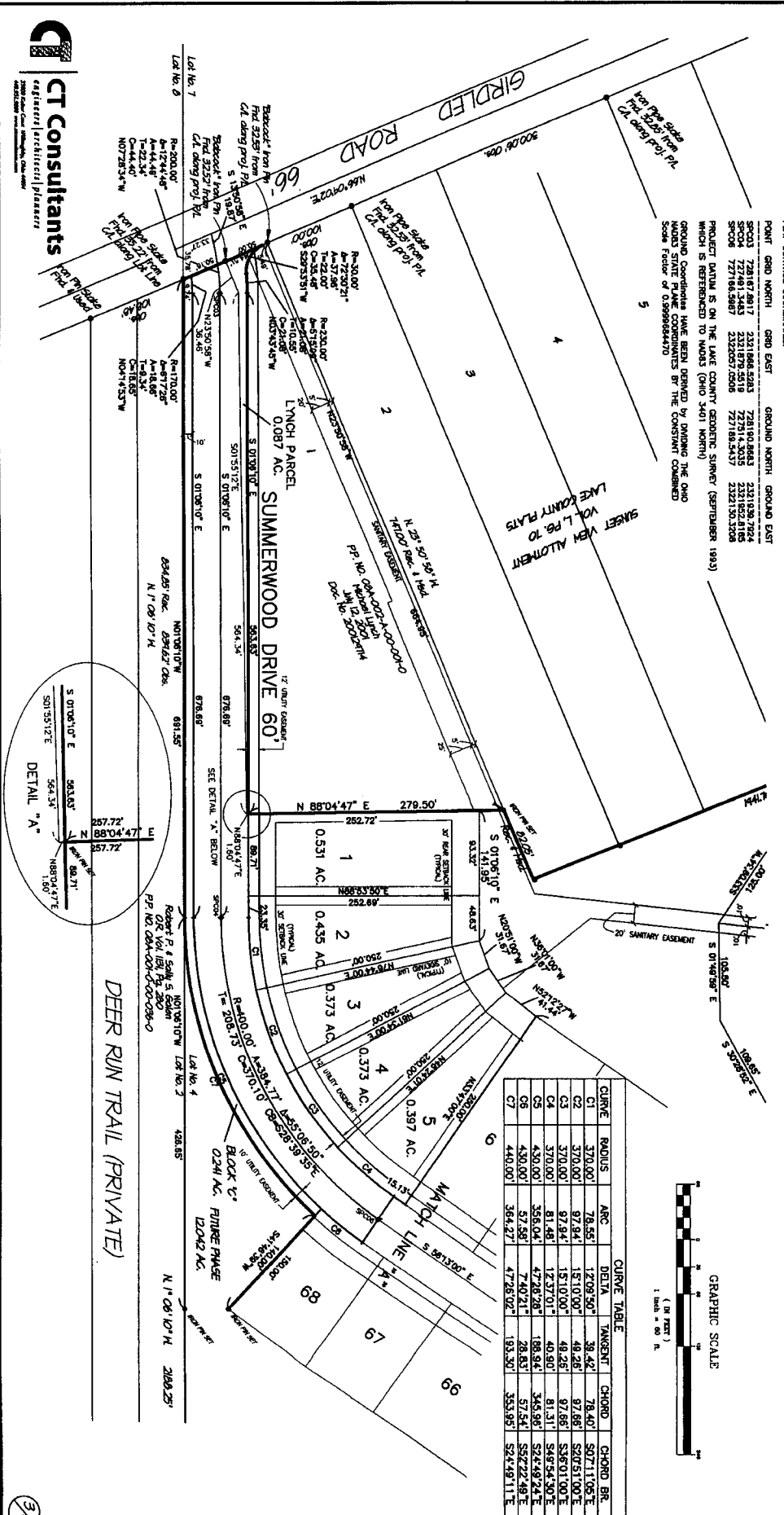


# SUMMERWOOD SUBDIVISION PHASE I

PLAT CONTROL CORNERIES:

POINT	GRID NORTH	GRID EAST	GROUND NORTH	GROUND EAST
SP003	728187.8017	2321864.5203	728180.8683	2321830.7924
SP004	727481.3443	2321879.4519	727314.3033	2321822.8166
SP005	727166.9887	2322007.6006	727185.5437	2322130.1308

PROJECT DATUM IS ON THE LAKE COUNTY GEODETIC SUMMER (GENUINER 1983) WHICH IS REFERENCED TO NAD83 (OHIO 3461 NORTH).  
GROUND CORNERIES HAVE BEEN DERIVED BY DARNING THE OHIO WOOD STATE PLATE CORNERIES BY THE CONSTANT COMPARED Scale Factor of 0.9999684470

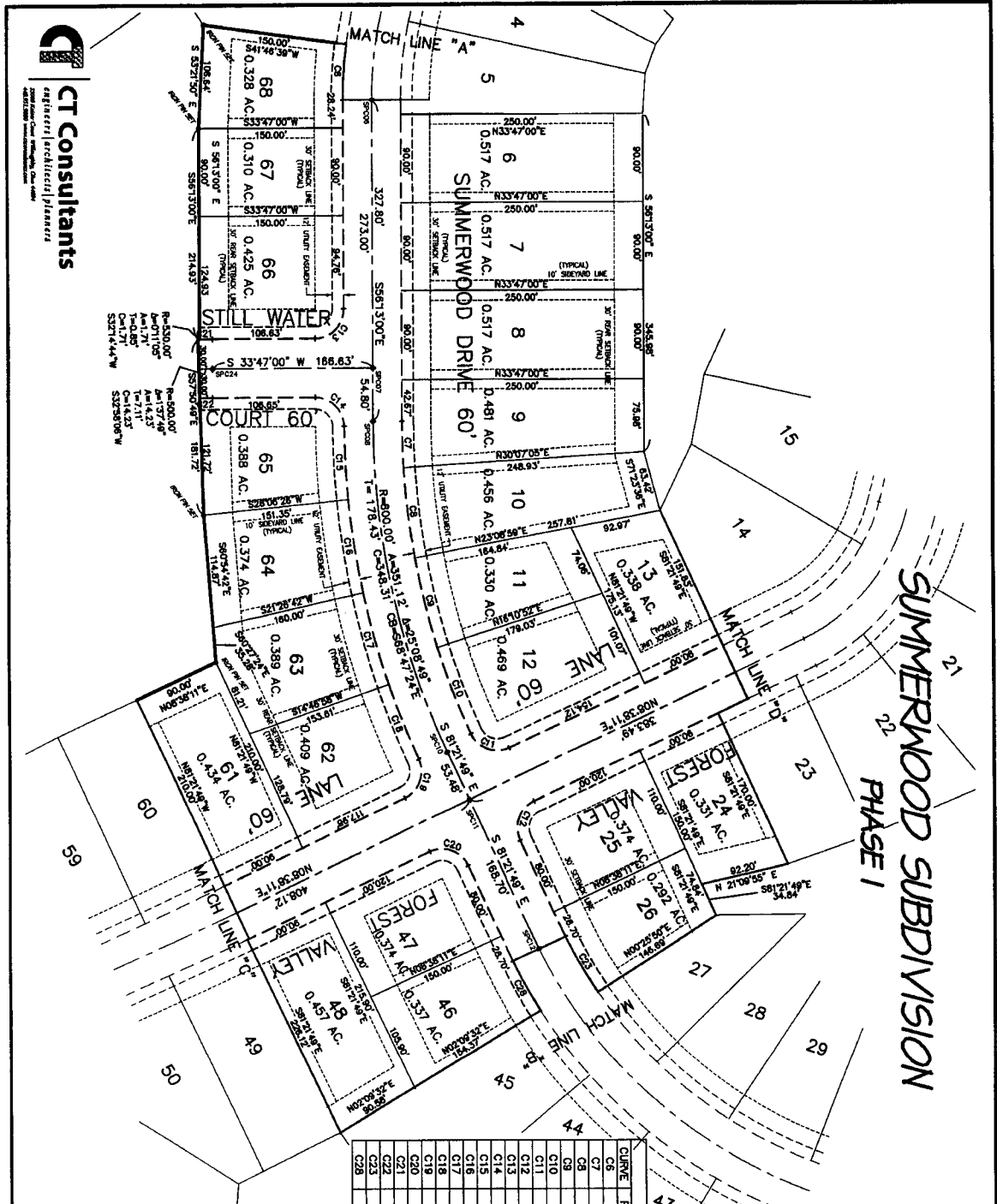


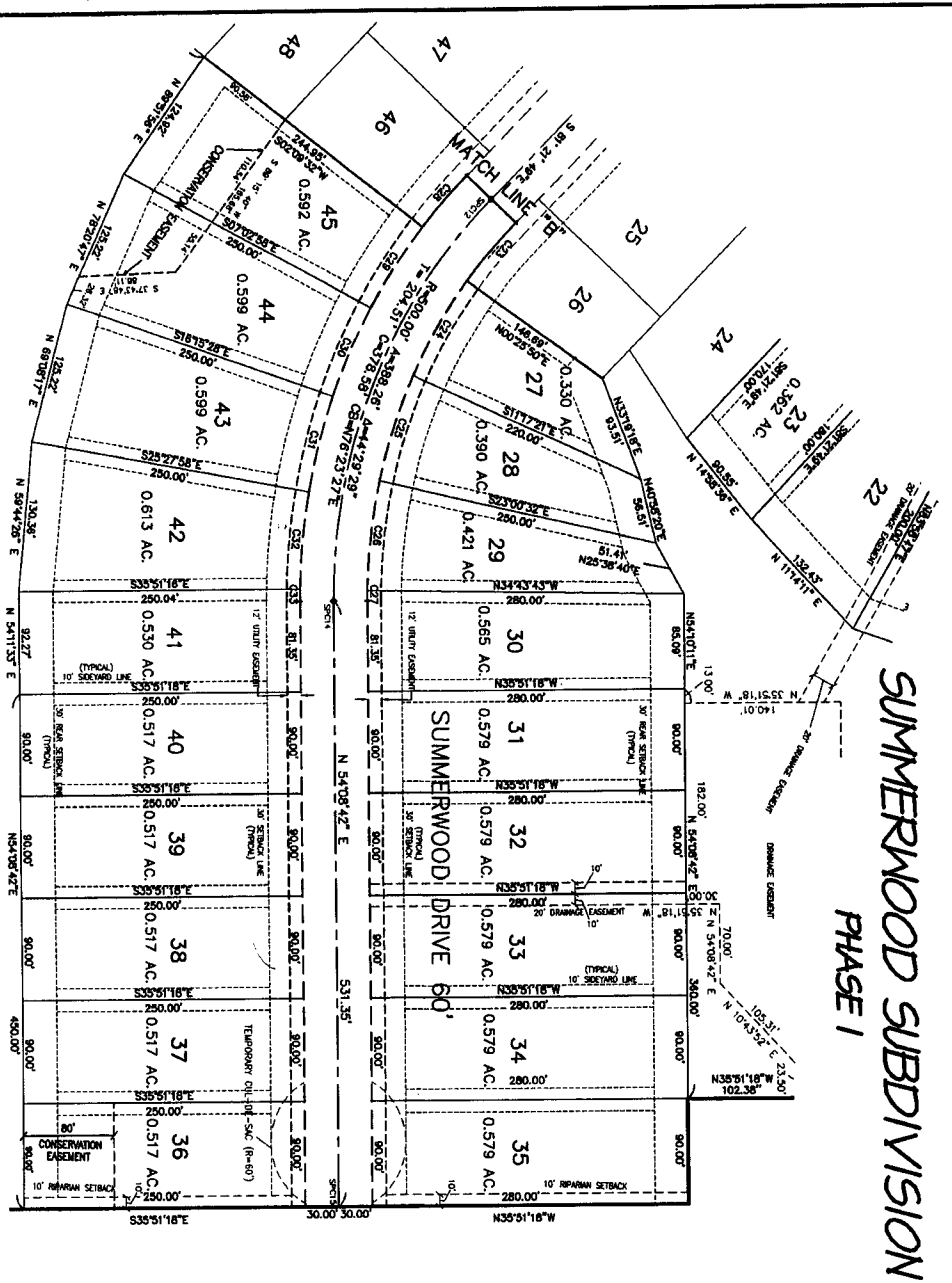
CURVE	RADIUS	ARC	DELTA	TANGENT	CHORD	CHORD BR.
C1	370.00'	78.55'	12°08'50"	38.42'	78.40'	S 07°11'05" E
C2	370.00'	87.84'	13°10'00"	48.26'	87.66'	S 26°05'10" E
C3	370.00'	87.84'	13°10'00"	48.26'	87.66'	S 26°05'10" E
C4	370.00'	81.48'	12°37'01"	40.90'	81.31'	S 45°54'30" E
C5	430.00'	356.04'	47°26'28"	188.94'	345.98'	S 24°49'24" E
C6	430.00'	57.58'	7°40'21"	28.83'	57.54'	S 52°22'49" E
C7	440.00'	364.27'	47°26'02"	193.30'	353.95'	S 24°49'11" E





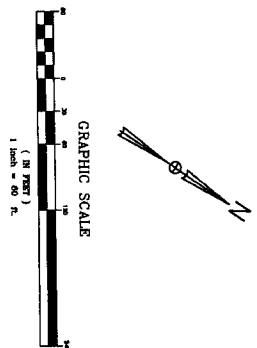
**CT Consultants**  
 registered professional planners  
 2000 North Lincoln Avenue  
 Suite 100  
 Lincoln, Nebraska 68502  
 Phone: 402.476.1111  
 Fax: 402.476.1112  
 Email: info@ctplanners.com





**SUMMERWOOD SUBDIVISION  
PHASE I**

CURVE	RADIUS	ARC	DELTA	TANGENT	CHORD	CHORD BR.
C23	470.00'	67.31'	87.221°	33.71'	67.26'	S85°28.00'E
C24	470.00'	98.14'	114°31'1"	48.24'	95.97'	N64°34.14'E
C25	470.00'	98.14'	114°31'1"	48.24'	95.97'	N72°51.03'E
C26	470.00'	98.14'	114°31'1"	48.24'	95.97'	N61°07.52'E
C27	470.00'	9.24'	107°35'	4.62'	9.24'	N54°42.28'E
C28	530.00'	59.82'	67°23'30"	29.99'	59.89'	S84°36.08'E
C29	530.00'	85.18'	91°23'30"	42.68'	85.09'	N87°33.17'E
C30	530.00'	85.18'	91°23'30"	42.68'	85.09'	N78°20.47'E
C31	530.00'	85.18'	91°23'30"	42.68'	85.09'	N69°08.17'E
C32	530.00'	85.18'	91°23'30"	42.68'	85.09'	N59°55.47'E
C33	530.00'	10.92'	110°50'	5.46'	10.92'	N45°44.07'E



BUILDING SETBACK ON S/L 35, 36 AND 37 WILL COMPLY WITH THE 100 FOOT RIPARIAN SETBACK ON BOTH SIDES OF THE STREAM

**PLAT CONTROL COORDINATES:**

POINT	GRID NORTH	GRID EAST	GROUND NORTH	GROUND EAST
SPC12	729824.8501	232287.6418	726847.2843	232284.7175
SPC13	729814.0389	232324.7800	726836.8739	232331.5975
SPC14	729814.0389	232387.4274	727280.0333	232376.7443

PRODUCT DATUM IS ON THE LAKE COUNTY GEODETIC SURVEY (SEPTEMBER 1893) WHICH IS REFERENCED TO MADS3 (GRID 3401 NORTH).

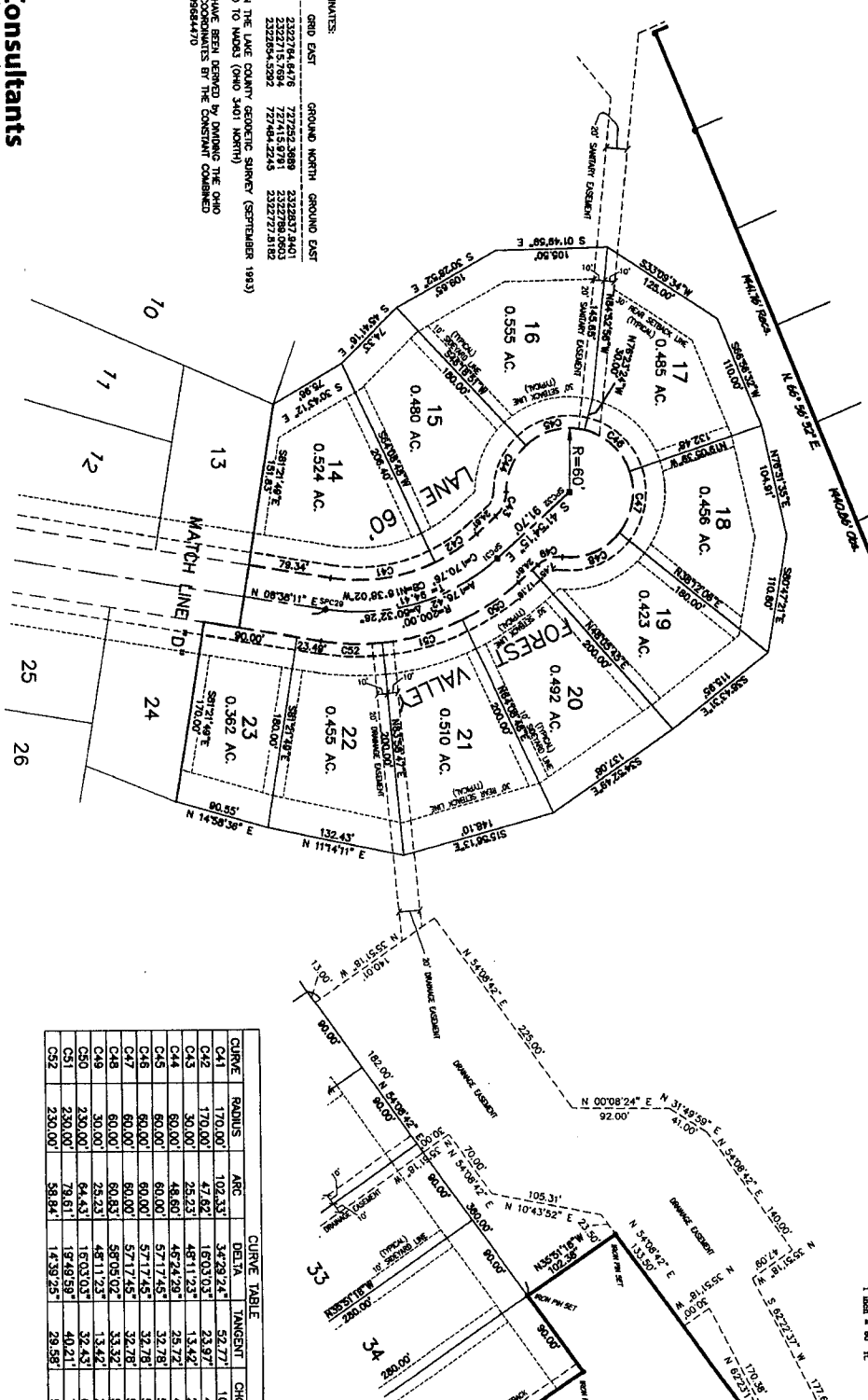
GROUND COORDINATES HAVE BEEN DERIVED BY DIVIDING THE GRID MADS3 STATE PLANE COORDINATES BY THE CONSTANT COMBINED Scale Factor of 0.9898884470





POINT CONTROL COORDINATES:

POINT	GRID NORTH	GRID EAST	GROUND NORTH	GROUND EAST
SP01	222784.4476	727461.2702	727461.2702	222784.4476
SP02	222784.4476	727461.2702	727461.2702	222784.4476
SP03	222784.4476	727461.2702	727461.2702	222784.4476
SP04	222784.4476	727461.2702	727461.2702	222784.4476
SP05	222784.4476	727461.2702	727461.2702	222784.4476
SP06	222784.4476	727461.2702	727461.2702	222784.4476
SP07	222784.4476	727461.2702	727461.2702	222784.4476
SP08	222784.4476	727461.2702	727461.2702	222784.4476
SP09	222784.4476	727461.2702	727461.2702	222784.4476
SP10	222784.4476	727461.2702	727461.2702	222784.4476
SP11	222784.4476	727461.2702	727461.2702	222784.4476
SP12	222784.4476	727461.2702	727461.2702	222784.4476
SP13	222784.4476	727461.2702	727461.2702	222784.4476
SP14	222784.4476	727461.2702	727461.2702	222784.4476
SP15	222784.4476	727461.2702	727461.2702	222784.4476
SP16	222784.4476	727461.2702	727461.2702	222784.4476
SP17	222784.4476	727461.2702	727461.2702	222784.4476
SP18	222784.4476	727461.2702	727461.2702	222784.4476
SP19	222784.4476	727461.2702	727461.2702	222784.4476
SP20	222784.4476	727461.2702	727461.2702	222784.4476
SP21	222784.4476	727461.2702	727461.2702	222784.4476
SP22	222784.4476	727461.2702	727461.2702	222784.4476
SP23	222784.4476	727461.2702	727461.2702	222784.4476
SP24	222784.4476	727461.2702	727461.2702	222784.4476
SP25	222784.4476	727461.2702	727461.2702	222784.4476
SP26	222784.4476	727461.2702	727461.2702	222784.4476
SP27	222784.4476	727461.2702	727461.2702	222784.4476
SP28	222784.4476	727461.2702	727461.2702	222784.4476
SP29	222784.4476	727461.2702	727461.2702	222784.4476
SP30	222784.4476	727461.2702	727461.2702	222784.4476
SP31	222784.4476	727461.2702	727461.2702	222784.4476
SP32	222784.4476	727461.2702	727461.2702	222784.4476
SP33	222784.4476	727461.2702	727461.2702	222784.4476
SP34	222784.4476	727461.2702	727461.2702	222784.4476
SP35	222784.4476	727461.2702	727461.2702	222784.4476
SP36	222784.4476	727461.2702	727461.2702	222784.4476
SP37	222784.4476	727461.2702	727461.2702	222784.4476
SP38	222784.4476	727461.2702	727461.2702	222784.4476
SP39	222784.4476	727461.2702	727461.2702	222784.4476
SP40	222784.4476	727461.2702	727461.2702	222784.4476
SP41	222784.4476	727461.2702	727461.2702	222784.4476
SP42	222784.4476	727461.2702	727461.2702	222784.4476
SP43	222784.4476	727461.2702	727461.2702	222784.4476
SP44	222784.4476	727461.2702	727461.2702	222784.4476
SP45	222784.4476	727461.2702	727461.2702	222784.4476
SP46	222784.4476	727461.2702	727461.2702	222784.4476
SP47	222784.4476	727461.2702	727461.2702	222784.4476
SP48	222784.4476	727461.2702	727461.2702	222784.4476
SP49	222784.4476	727461.2702	727461.2702	222784.4476
SP50	222784.4476	727461.2702	727461.2702	222784.4476
SP51	222784.4476	727461.2702	727461.2702	222784.4476
SP52	222784.4476	727461.2702	727461.2702	222784.4476
SP53	222784.4476	727461.2702	727461.2702	222784.4476
SP54	222784.4476	727461.2702	727461.2702	222784.4476
SP55	222784.4476	727461.2702	727461.2702	222784.4476
SP56	222784.4476	727461.2702	727461.2702	222784.4476
SP57	222784.4476	727461.2702	727461.2702	222784.4476
SP58	222784.4476	727461.2702	727461.2702	222784.4476
SP59	222784.4476	727461.2702	727461.2702	222784.4476
SP60	222784.4476	727461.2702	727461.2702	222784.4476
SP61	222784.4476	727461.2702	727461.2702	222784.4476
SP62	222784.4476	727461.2702	727461.2702	222784.4476
SP63	222784.4476	727461.2702	727461.2702	222784.4476
SP64	222784.4476	727461.2702	727461.2702	222784.4476
SP65	222784.4476	727461.2702	727461.2702	222784.4476
SP66	222784.4476	727461.2702	727461.2702	222784.4476
SP67	222784.4476	727461.2702	727461.2702	222784.4476
SP68	222784.4476	727461.2702	727461.2702	222784.4476
SP69	222784.4476	727461.2702	727461.2702	222784.4476
SP70	222784.4476	727461.2702	727461.2702	222784.4476
SP71	222784.4476	727461.2702	727461.2702	222784.4476
SP72	222784.4476	727461.2702	727461.2702	222784.4476
SP73	222784.4476	727461.2702	727461.2702	222784.4476
SP74	222784.4476	727461.2702	727461.2702	222784.4476
SP75	222784.4476	727461.2702	727461.2702	222784.4476
SP76	222784.4476	727461.2702	727461.2702	222784.4476
SP77	222784.4476	727461.2702	727461.2702	222784.4476
SP78	222784.4476	727461.2702	727461.2702	222784.4476
SP79	222784.4476	727461.2702	727461.2702	222784.4476
SP80	222784.4476	727461.2702	727461.2702	222784.4476
SP81	222784.4476	727461.2702	727461.2702	222784.4476
SP82	222784.4476	727461.2702	727461.2702	222784.4476
SP83	222784.4476	727461.2702	727461.2702	222784.4476
SP84	222784.4476	727461.2702	727461.2702	222784.4476
SP85	222784.4476	727461.2702	727461.2702	222784.4476
SP86	222784.4476	727461.2702	727461.2702	222784.4476
SP87	222784.4476	727461.2702	727461.2702	222784.4476
SP88	222784.4476	727461.2702	727461.2702	222784.4476
SP89	222784.4476	727461.2702	727461.2702	222784.4476
SP90	222784.4476	727461.2702	727461.2702	222784.4476
SP91	222784.4476	727461.2702	727461.2702	222784.4476
SP92	222784.4476	727461.2702	727461.2702	222784.4476
SP93	222784.4476	727461.2702	727461.2702	222784.4476
SP94	222784.4476	727461.2702	727461.2702	222784.4476
SP95	222784.4476	727461.2702	727461.2702	222784.4476
SP96	222784.4476	727461.2702	727461.2702	222784.4476
SP97	222784.4476	727461.2702	727461.2702	222784.4476
SP98	222784.4476	727461.2702	727461.2702	222784.4476
SP99	222784.4476	727461.2702	727461.2702	222784.4476
SP100	222784.4476	727461.2702	727461.2702	222784.4476



CURVE TABLE

CURVE	RADIUS	ARC	DELTA	TANGENT	CHORD	CHORD BR.
C41	170.00'	102.33'	34.78°24'	52.77'	100.80'	N08.58°31'W
C42	170.00'	47.82'	1.60°03'	23.97'	47.47'	N33.58°44.1'W
C43	30.00'	25.23'	48°11'23"	13.42'	24.49'	N65.58°57'W
C44	60.00'	48.60'	45°24'29"	25.72'	47.28'	S65.53°24'E
C45	60.00'	60.00'	57°17'45"	32.78'	57.53'	S15.02°17'E
C46	60.00'	60.00'	57°17'45"	32.78'	57.53'	S42.15°28'W
C47	60.00'	60.00'	57°17'45"	32.78'	57.53'	N67.28°47'W
C48	60.00'	60.00'	58°05'02"	33.32'	58.25'	N02.48°23'W
C49	30.00'	25.23'	48°11'23"	13.42'	24.49'	S17.48°34'E
C50	250.00'	62.43'	1.60°03'	32.43'	64.22'	N33.58°44.1'W
C51	250.00'	78.61'	1.6°49'59"	40.21'	78.22'	N15.56°13'W
C52	250.00'	58.84'	1.4°39'25"	29.58'	58.88'	N01.18°29'E

# SUMMERWOOD SUBDIVISION PHASE I