

ACCEPTANCE AGREEMENT

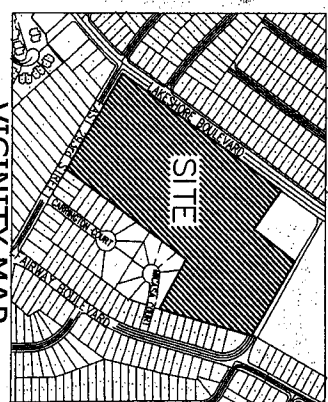
BE IT REMEMBERED THAT THE SHORELAND CROSSINGS SUBDIVISION, BEING A SUBDIVISION OF 23.8828 ACRES...

AND DOES ALSO GRANT INTO THE CITY OF MILWAUKEE, WISCONSIN, ACCESS EASEMENT AS SHOWN HEREON...

AND DOES ALSO GRANT INTO THE HOMEOWNERS ASSOCIATION WITH SHORELAND CROSSINGS ACCESS EASEMENT AS SHOWN...

SHORELAND CROSSINGS SUBDIVISION No. 2

BEING A SUBDIVISION OF 23.8828 ACRES IN THE ORIGINAL WILLOWBUSH TOWNSHIP LOT 5, TRACT 15...



VICINITY MAP SCALE 1 INCH = 400 FEET

RECORDING NOTICE: I HEREBY CERTIFY THAT THE ABOVE DESCRIBED MAP AND RECORDS HAVE BEEN RECORDED IN THE OFFICE OF THE COUNTY CLERK OF MILWAUKEE COUNTY, WISCONSIN...

NOTARY PUBLIC: MARISSA A. LEBLANC, Notary Public, State of Wisconsin, My Comm. Exp. 11/8/11. Received for record March 29, 2007.

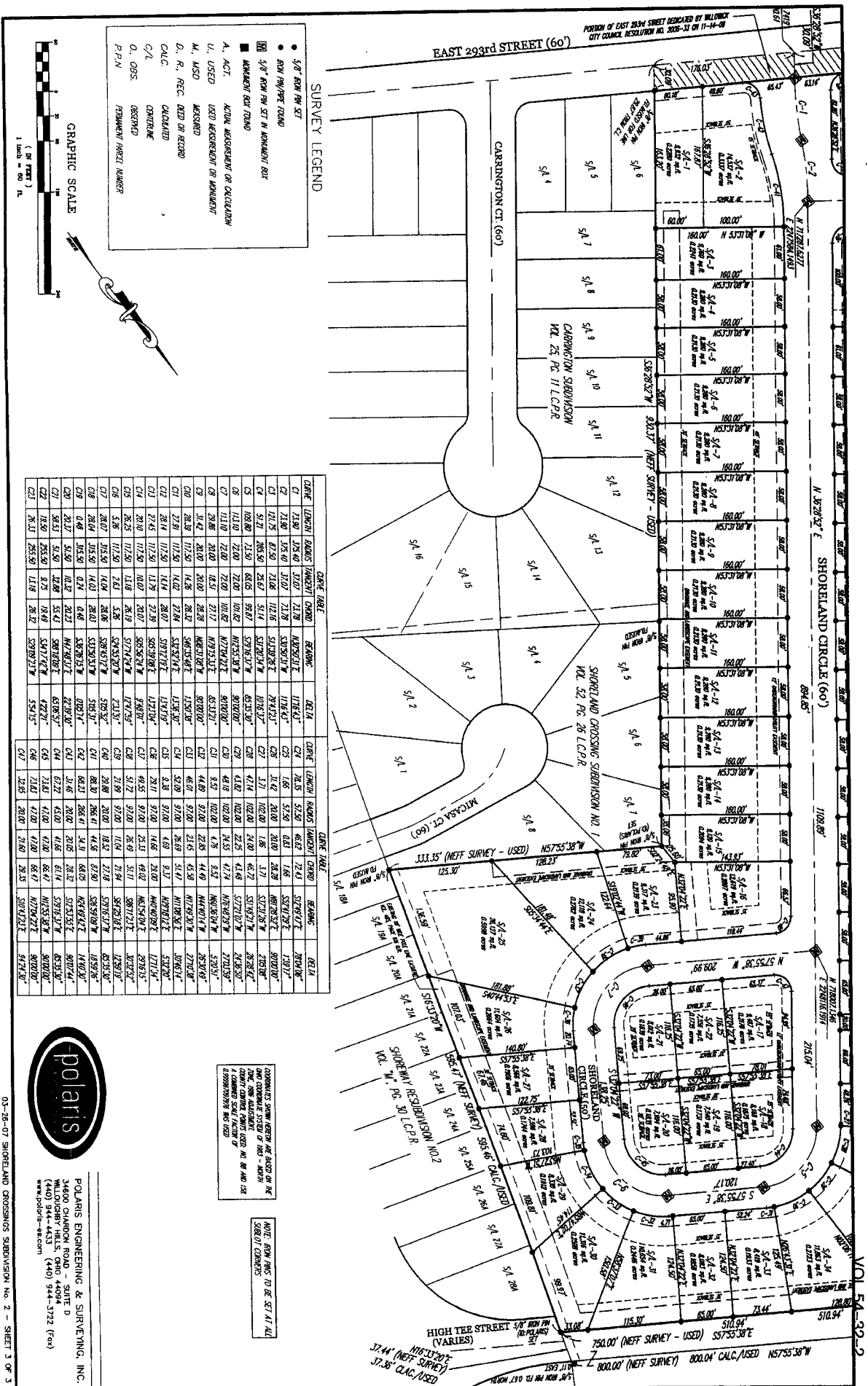


POLARIS ENGINEERING & SURVEYING, INC. 3480 SHARDON ROAD, SUITE D, SHARDON, OHIO 44074. (440) 944-4433

TRANSFERRED March 29, 2007 Edward H. Zupancic, Esq. Attorney, Lake County, Ohio

APPROVED AND ACCEPTED: [Signatures and names of parties including Michael P. S. Kelly, Edward H. Zupancic, etc.]





EAST 293rd STREET (60')

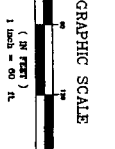
CARRINGTON CT (60')

SHOELAND CIRCLE (60')

MCCASID CT (60')

HIGH TEE STREET 4' OF ROW IN PLACE (VARIES)

- SURVEY LEGEND**
- ROW FROM PLAN SET
 - ROW FROM FIELD
 - MONUMENT FROM FIELD
 - MONUMENT FROM RECORD
 - A, ACT. ACTUAL MEASUREMENT OR CALCULATION
 - U, USED USED MEASUREMENT OR CALCULATION
 - M, M.S.D. MEASURED
 - D, R., REC. RECD OR RECORD
 - CALC. CALCULATED
 - C/L. CENTERLINE
 - O, O.G.S. ORIGINAL SURVEY
 - P.P.N. PERMANENT POINT NUMBER



LINE	LENGTH	BEARING	ADJACENT	BEARING	DELTA	LINE	LENGTH	BEARING	ADJACENT	BEARING	DELTA
C1	21.97	S75°40' E	21.78	S75°40' E	0.19	C24	28.25	S52°50' E	28.00	0.25	S52°50' E
C2	121.25	S75°40' E	121.06	S75°40' E	0.19	C25	1.66	S52°50' E	1.66	0.00	S52°50' E
C3	121.25	S75°40' E	121.06	S75°40' E	0.19	C26	1.66	S52°50' E	1.66	0.00	S52°50' E
C4	121.25	S75°40' E	121.06	S75°40' E	0.19	C27	1.66	S52°50' E	1.66	0.00	S52°50' E
C5	121.25	S75°40' E	121.06	S75°40' E	0.19	C28	1.66	S52°50' E	1.66	0.00	S52°50' E
C6	121.25	S75°40' E	121.06	S75°40' E	0.19	C29	1.66	S52°50' E	1.66	0.00	S52°50' E
C7	121.25	S75°40' E	121.06	S75°40' E	0.19	C30	1.66	S52°50' E	1.66	0.00	S52°50' E
C8	121.25	S75°40' E	121.06	S75°40' E	0.19	C31	1.66	S52°50' E	1.66	0.00	S52°50' E
C9	121.25	S75°40' E	121.06	S75°40' E	0.19	C32	1.66	S52°50' E	1.66	0.00	S52°50' E
C10	121.25	S75°40' E	121.06	S75°40' E	0.19	C33	1.66	S52°50' E	1.66	0.00	S52°50' E
C11	121.25	S75°40' E	121.06	S75°40' E	0.19	C34	1.66	S52°50' E	1.66	0.00	S52°50' E
C12	121.25	S75°40' E	121.06	S75°40' E	0.19	C35	1.66	S52°50' E	1.66	0.00	S52°50' E
C13	121.25	S75°40' E	121.06	S75°40' E	0.19	C36	1.66	S52°50' E	1.66	0.00	S52°50' E
C14	121.25	S75°40' E	121.06	S75°40' E	0.19	C37	1.66	S52°50' E	1.66	0.00	S52°50' E
C15	121.25	S75°40' E	121.06	S75°40' E	0.19	C38	1.66	S52°50' E	1.66	0.00	S52°50' E
C16	121.25	S75°40' E	121.06	S75°40' E	0.19	C39	1.66	S52°50' E	1.66	0.00	S52°50' E
C17	121.25	S75°40' E	121.06	S75°40' E	0.19	C40	1.66	S52°50' E	1.66	0.00	S52°50' E
C18	121.25	S75°40' E	121.06	S75°40' E	0.19	C41	1.66	S52°50' E	1.66	0.00	S52°50' E
C19	121.25	S75°40' E	121.06	S75°40' E	0.19	C42	1.66	S52°50' E	1.66	0.00	S52°50' E
C20	121.25	S75°40' E	121.06	S75°40' E	0.19	C43	1.66	S52°50' E	1.66	0.00	S52°50' E
C21	121.25	S75°40' E	121.06	S75°40' E	0.19	C44	1.66	S52°50' E	1.66	0.00	S52°50' E
C22	121.25	S75°40' E	121.06	S75°40' E	0.19	C45	1.66	S52°50' E	1.66	0.00	S52°50' E
C23	121.25	S75°40' E	121.06	S75°40' E	0.19	C46	1.66	S52°50' E	1.66	0.00	S52°50' E
C24	121.25	S75°40' E	121.06	S75°40' E	0.19	C47	1.66	S52°50' E	1.66	0.00	S52°50' E



POLARIS ENGINEERING & SURVEYING, INC.
 3460 CHAMBER ROAD - SUITE D
 WILLOUGHBY HILLS, OHIO 44094
 (440) 944-4433 (440) 944-5722 (fax)
 www.polaris-survey.com

ADJUSTMENTS MADE TO THE RECORD OF THE SURVEY TO CORRECT FOR ERRORS IN MEASUREMENT AND CALCULATION. A COMPARISON OF THE RECORD OF THE SURVEY WITH THE FIELD MEASUREMENTS HAS BEEN MADE AND THE RECORD IS FOUND TO BE CORRECT.

NOTE: FROM THIS TO BE SET AT ALL CORNERS.