

ACCEPTANCE AND DEDICATION

BE IT KNOWN THAT THE UNDERSIGNED, RICHARD M. OSBORNE JR., UTA, 1-13-04, HEREBY CERTIFIES THAT THIS IS AN CORRECT REPRESENTATION OF THE NATURE, EXTENT AND SCOPE OF THE SUBDIVISION OF SAID LOT NUMBERED 10 NORTH, INCLUDING, AND ALSO HEREBY ACCEPTS THAT THE NATURE, EXTENT AND SCOPE OF SAID SUBDIVISION WILL BE AS SHOWN ON THE PLAN...

AND DOES HEREBY GRANT UNTO THE ELLIMINATING COMPANY, SPEC. OPTICAL, NATURAL GAS CO. AND ALL OTHER COMMUNICATION UTILITIES COMPANIES AND ALL OTHERS HERETOFORE REFERRED TO AS THE UTILITIES AND ANY OTHER COMMUNICATION UTILITIES THROUGHOUT THE ENTIRE SUBDIVISION AND PARCELS WITHIN SAID SUBDIVISION, CONVEYANCE OF ALL RIGHTS OF EASEMENT AND INTEREST IN SAID SUBDIVISION AND PARCELS WITHIN SAID SUBDIVISION...

AND DOES ALSO GRANT UNTO THE TOWNSHIP OF CONCORD, OHIO, DAMAGE EASEMENTS AS SHOWN HEREON TO UTA, MAINTAIN, REPAIR OR REPAIR STORM SEWER, THE DAMAGE DITCHES, SWALES AND/OR NECESSARY IMPROVEMENTS. AND DOES ALSO GRANT UNTO THE TOWNSHIP OF CONCORD, OHIO, EASEMENTS AS SHOWN HEREON TO MAINTAIN THE NECESSARY ROADWAY SCOPES...

AND DOES GRANT UNTO THE BOARD OF LAKE COUNTY COMMISSIONERS, PLANNING, ZONING, SUBDIVISION, CONSTRUCTION, SCENIC PRESERVATION, AND OTHER APPROPRIATE AGENCIES OF LAKE COUNTY, OHIO, THE RIGHT AND ASSURED (GRANTING RIGHTS) RIGHT HEREON TO ACCESS, CONTRACT, OBTAIN, MAINTAIN, REPAIR, RECONSTRUCT, AND RELOCATE SANITARY SEWERS, MANHOLES, AND OTHER APPROPRIATE UTILITIES...

Known as being part of Lot No. 2, Tract No. 2, Concord Township 10 North, Range 8 West of the Connecticut, County of Lake & State of Ohio

November 2004 SCALE: 1"=50'



LAND DESIGN consultants ENGINEERS - PLANNERS - SURVEYORS

2400 RIVERVIEW DRIVE, SUITE 200, CLEVELAND, OHIO 44115

AREA OF LOTS 44, 80, 47 Acres AREA OF RWS 5.4828 Acres AREA OF OUTLOT 0.8224 Acres TOTAL AREA 50.7107 Acres



MORTGAGE RELEASE BE IT KNOWN THAT THE HOME SAVINGS AND LOAN COMPANY, MORTGAGEE OF THE LAND INDICATED ON THE PLAN, DOES HEREBY JOIN IN THE ABOVE DEDICATION AND RELEASE FROM THE DEBTOR AND LENDER OF THE MORTGAGE HELD BY IT ON SAID PROPERTY...

SIGNED AND ACKNOWLEDGED IN THE PRESENCE OF: Richard M. Osborne Jr., Richard M. Osborne Jr., Angela Alexander

STATE OF OHIO COUNTY OF LAKE BY: Thomas R. Pauer, Notary Public, State of Ohio

APPROVALS

APPROVED THIS 25th DAY OF NOV 2004 BY THE LAKE COUNTY ENGINEER: Edward H. Zupanic

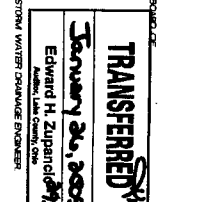
APPROVED THIS 11th DAY OF DEC 2004 BY THE LAKE COUNTY PLANNING COMMISSION: Robert J. Baker, P.E.

APPROVED THIS 11th DAY OF DEC 2004 BY THE CONCORD TOWNSHIP TRUSTEES: Susan Probst, Linda Combs, Linda Combs

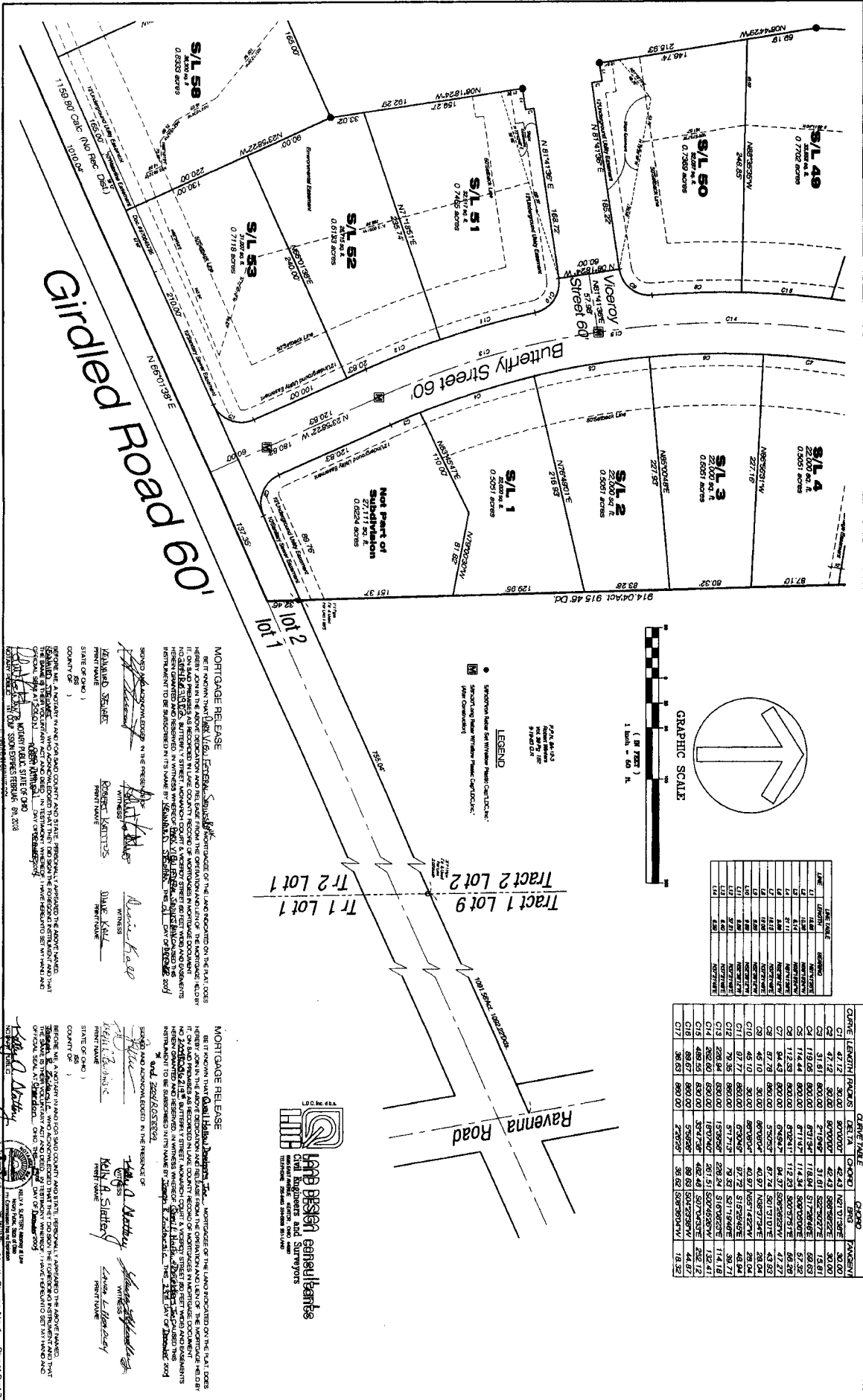
APPROVED THIS 2nd DAY OF DEC 2004 BY THE CONCORD TOWNSHIP ENGINEER: Chris Maguire

APPROVED THIS 2nd DAY OF DEC 2004 BY THE ELLIMINATING COMPANY: [Signature]

APPROVED THIS 2nd DAY OF DEC 2004 BY THE TOWNSHIP OF CONCORD, OHIO: [Signature]



THE NATURE PRESERVE NORTH PHASE NO. 1 SHEET 1 OF 7

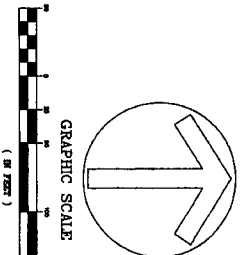


Girdled Road 60'

Butterfly Street 60'

Ravenna Road

Tract 1 Lot 1
Tract 1 Lot 2
Tract 2 Lot 1
Tract 2 Lot 2



LINE	LENGTH	BEARING
L1	16.88	N87°00'W
L2	4.14	N87°00'W
L3	4.14	N87°00'W
L4	4.14	N87°00'W
L5	4.14	N87°00'W
L6	4.14	N87°00'W
L7	4.14	N87°00'W
L8	4.14	N87°00'W
L9	4.14	N87°00'W
L10	4.14	N87°00'W
L11	4.14	N87°00'W
L12	4.14	N87°00'W
L13	4.14	N87°00'W
L14	4.14	N87°00'W

CHAIN	LENGTH	FAUCUS	COORD.	COORD.	
C1	30.00	89°00'00"	42.43	N67°01'28"E	
C2	47.12	30.00	89°00'00"	42.43	N67°01'28"E
C3	31.81	80.00	00.00	7°19'54"	S27°00'00"W
C4	118.05	80.00	87°13'	118.84	S17°28'46"E
C5	114.44	80.00	87°13'	114.54	S09°00'00"E
C6	114.44	80.00	87°13'	114.54	S09°00'00"E
C7	144.43	80.00	89°00'	84.27	S59°00'00"W
C8	87.79	80.00	57°52'	67.74	S01°17'11"E
C9	45.10	30.00	89°00'	43.97	N87°00'00"W
C10	45.10	30.00	89°00'	43.97	N87°00'00"W
C11	87.71	80.00	87°00'	87.71	S17°28'46"E
C12	78.38	80.00	87°13'	78.38	S17°28'46"E
C13	118.05	80.00	87°13'	118.05	S17°28'46"E
C14	488.55	80.00	187°24'	487.51	S02°46'58"W
C15	488.55	80.00	35°47'58"	488.48	S07°14'53"E
C16	89.67	80.00	57°52'	89.63	S04°23'28"W
C17	36.83	80.00	2°26'25"	36.82	S08°35'04"W

HPB DESIGN CONSULTANTS
Civil Engineers and Surveyors

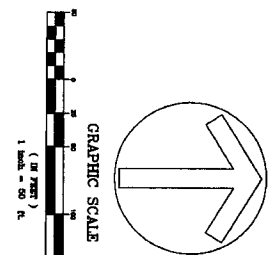
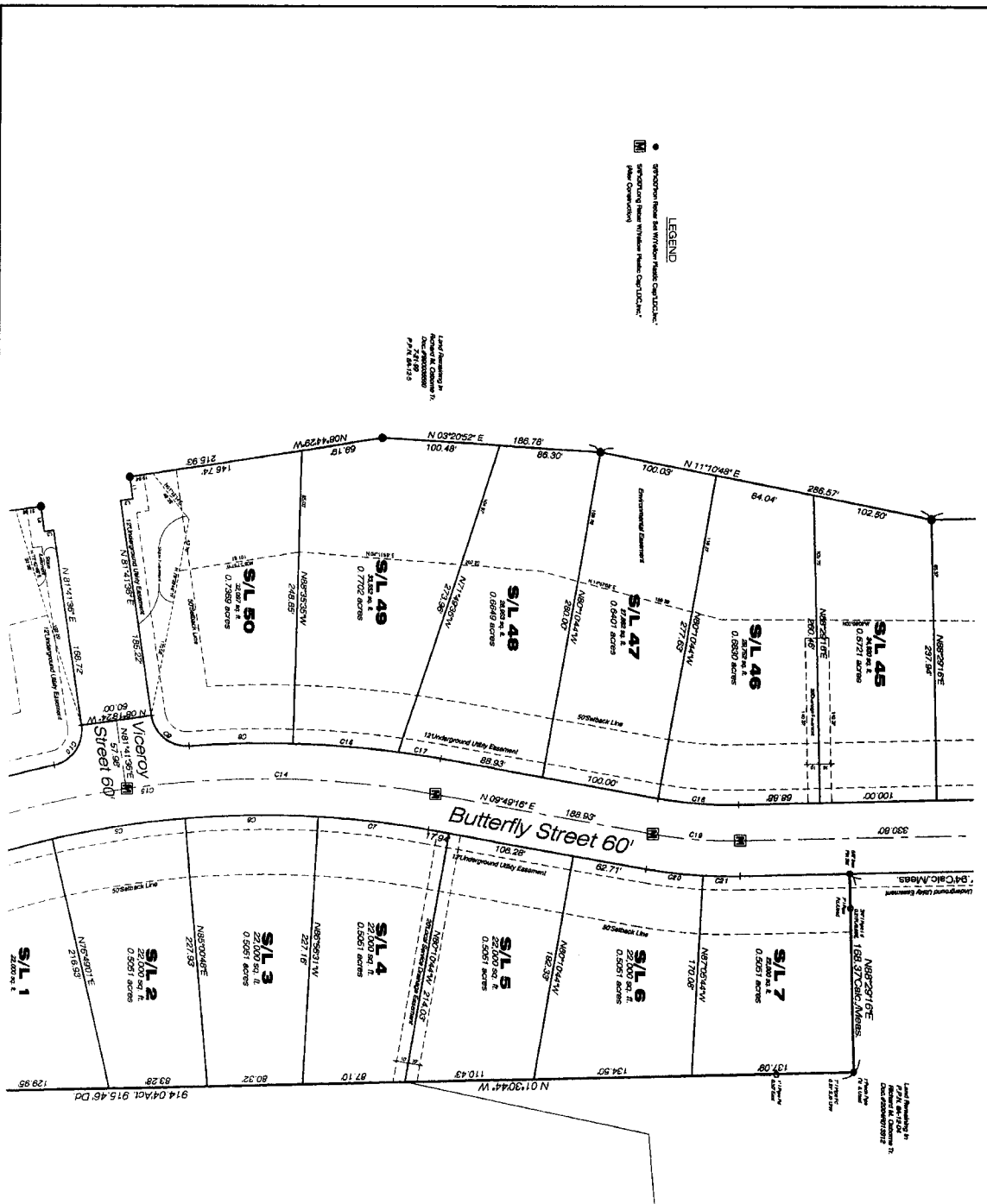
MORTGAGE RELEASE
I, Debra A. Schaefer, of the County of Cuyahoga, State of Ohio, do hereby certify that the within and related from the operation and/or of the mortgage held by Debra A. Schaefer as recorded in the County Records of Mortgages in the County of Cuyahoga, Ohio, in the name of Debra A. Schaefer, which mortgage was recorded in the County of Cuyahoga, Ohio, on the 11th day of December, 2003, and which mortgage was recorded in the name of Debra A. Schaefer, the 11th day of December, 2003.

WITNESSES:
Debra A. Schaefer
MORTGAGEE
Debra A. Schaefer
MORTGAGOR

MORTGAGE RELEASE
I, Debra A. Schaefer, of the County of Cuyahoga, State of Ohio, do hereby certify that the within and related from the operation and/or of the mortgage held by Debra A. Schaefer as recorded in the County Records of Mortgages in the County of Cuyahoga, Ohio, in the name of Debra A. Schaefer, which mortgage was recorded in the County of Cuyahoga, Ohio, on the 11th day of December, 2003, and which mortgage was recorded in the name of Debra A. Schaefer, the 11th day of December, 2003.

WITNESSES:
Debra A. Schaefer
MORTGAGEE
Debra A. Schaefer
MORTGAGOR

101 48-26-1

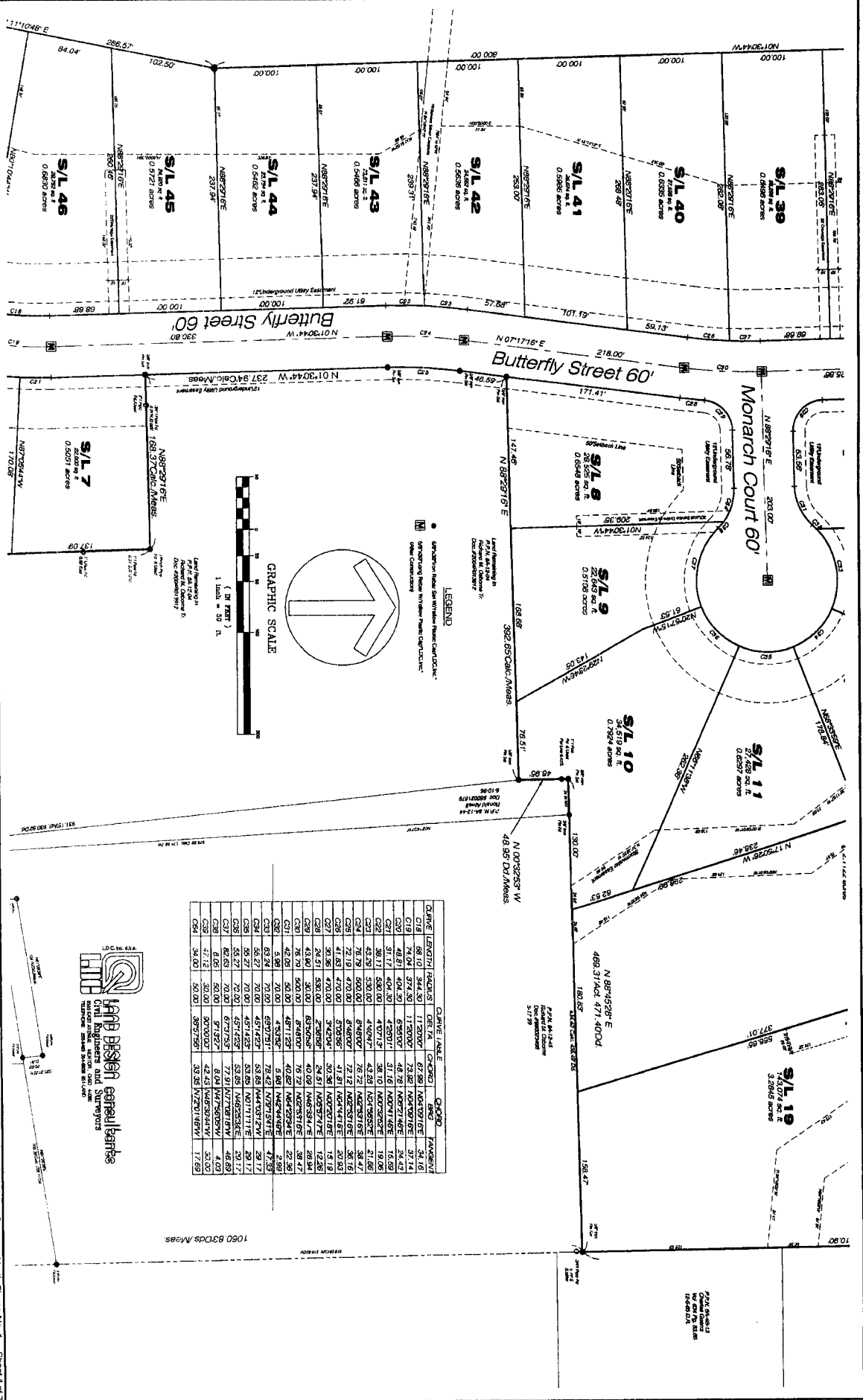


CLUSTER TABLE

CLUSTER	LENGTH	WIDTH	AREA	BEARING	ANGLE	PERCENT
C1	47.12	30.00	9070.00	42.43	N 71°01'39"E	30.00
C2	47.12	30.00	9070.00	42.43	S 89°52'27"E	30.00
C3	31.61	800.00	27949.6	31.61	S 2°52'07"W	15.81
C4	112.83	800.00	90264.0	112.83	S 71°28'05"E	52.82
C5	112.83	800.00	90264.0	112.83	S 89°52'27"E	52.82
C6	48.65	800.00	38920.0	48.65	S 89°52'27"E	24.41
C7	48.65	800.00	38920.0	48.65	S 89°52'27"E	24.41
C8	48.65	800.00	38920.0	48.65	S 89°52'27"E	24.41
C9	48.65	800.00	38920.0	48.65	S 89°52'27"E	24.41
C10	48.65	800.00	38920.0	48.65	S 89°52'27"E	24.41
C11	48.65	800.00	38920.0	48.65	S 89°52'27"E	24.41
C12	48.65	800.00	38920.0	48.65	S 89°52'27"E	24.41
C13	48.65	800.00	38920.0	48.65	S 89°52'27"E	24.41
C14	48.65	800.00	38920.0	48.65	S 89°52'27"E	24.41
C15	48.65	800.00	38920.0	48.65	S 89°52'27"E	24.41
C16	48.65	800.00	38920.0	48.65	S 89°52'27"E	24.41
C17	48.65	800.00	38920.0	48.65	S 89°52'27"E	24.41
C18	48.65	800.00	38920.0	48.65	S 89°52'27"E	24.41
C19	48.65	800.00	38920.0	48.65	S 89°52'27"E	24.41
C20	48.65	800.00	38920.0	48.65	S 89°52'27"E	24.41
C21	48.65	800.00	38920.0	48.65	S 89°52'27"E	24.41
C22	48.65	800.00	38920.0	48.65	S 89°52'27"E	24.41
C23	48.65	800.00	38920.0	48.65	S 89°52'27"E	24.41
C24	48.65	800.00	38920.0	48.65	S 89°52'27"E	24.41
C25	48.65	800.00	38920.0	48.65	S 89°52'27"E	24.41
C26	48.65	800.00	38920.0	48.65	S 89°52'27"E	24.41
C27	48.65	800.00	38920.0	48.65	S 89°52'27"E	24.41
C28	48.65	800.00	38920.0	48.65	S 89°52'27"E	24.41
C29	48.65	800.00	38920.0	48.65	S 89°52'27"E	24.41
C30	48.65	800.00	38920.0	48.65	S 89°52'27"E	24.41
C31	48.65	800.00	38920.0	48.65	S 89°52'27"E	24.41
C32	48.65	800.00	38920.0	48.65	S 89°52'27"E	24.41
C33	48.65	800.00	38920.0	48.65	S 89°52'27"E	24.41
C34	48.65	800.00	38920.0	48.65	S 89°52'27"E	24.41
C35	48.65	800.00	38920.0	48.65	S 89°52'27"E	24.41
C36	48.65	800.00	38920.0	48.65	S 89°52'27"E	24.41
C37	48.65	800.00	38920.0	48.65	S 89°52'27"E	24.41
C38	48.65	800.00	38920.0	48.65	S 89°52'27"E	24.41
C39	48.65	800.00	38920.0	48.65	S 89°52'27"E	24.41
C40	48.65	800.00	38920.0	48.65	S 89°52'27"E	24.41
C41	48.65	800.00	38920.0	48.65	S 89°52'27"E	24.41
C42	48.65	800.00	38920.0	48.65	S 89°52'27"E	24.41
C43	48.65	800.00	38920.0	48.65	S 89°52'27"E	24.41
C44	48.65	800.00	38920.0	48.65	S 89°52'27"E	24.41
C45	48.65	800.00	38920.0	48.65	S 89°52'27"E	24.41
C46	48.65	800.00	38920.0	48.65	S 89°52'27"E	24.41
C47	48.65	800.00	38920.0	48.65	S 89°52'27"E	24.41
C48	48.65	800.00	38920.0	48.65	S 89°52'27"E	24.41
C49	48.65	800.00	38920.0	48.65	S 89°52'27"E	24.41
C50	48.65	800.00	38920.0	48.65	S 89°52'27"E	24.41
C51	48.65	800.00	38920.0	48.65	S 89°52'27"E	24.41
C52	48.65	800.00	38920.0	48.65	S 89°52'27"E	24.41
C53	48.65	800.00	38920.0	48.65	S 89°52'27"E	24.41
C54	48.65	800.00	38920.0	48.65	S 89°52'27"E	24.41
C55	48.65	800.00	38920.0	48.65	S 89°52'27"E	24.41
C56	48.65	800.00	38920.0	48.65	S 89°52'27"E	24.41
C57	48.65	800.00	38920.0	48.65	S 89°52'27"E	24.41
C58	48.65	800.00	38920.0	48.65	S 89°52'27"E	24.41
C59	48.65	800.00	38920.0	48.65	S 89°52'27"E	24.41
C60	48.65	800.00	38920.0	48.65	S 89°52'27"E	24.41

Land Brothers General Partners

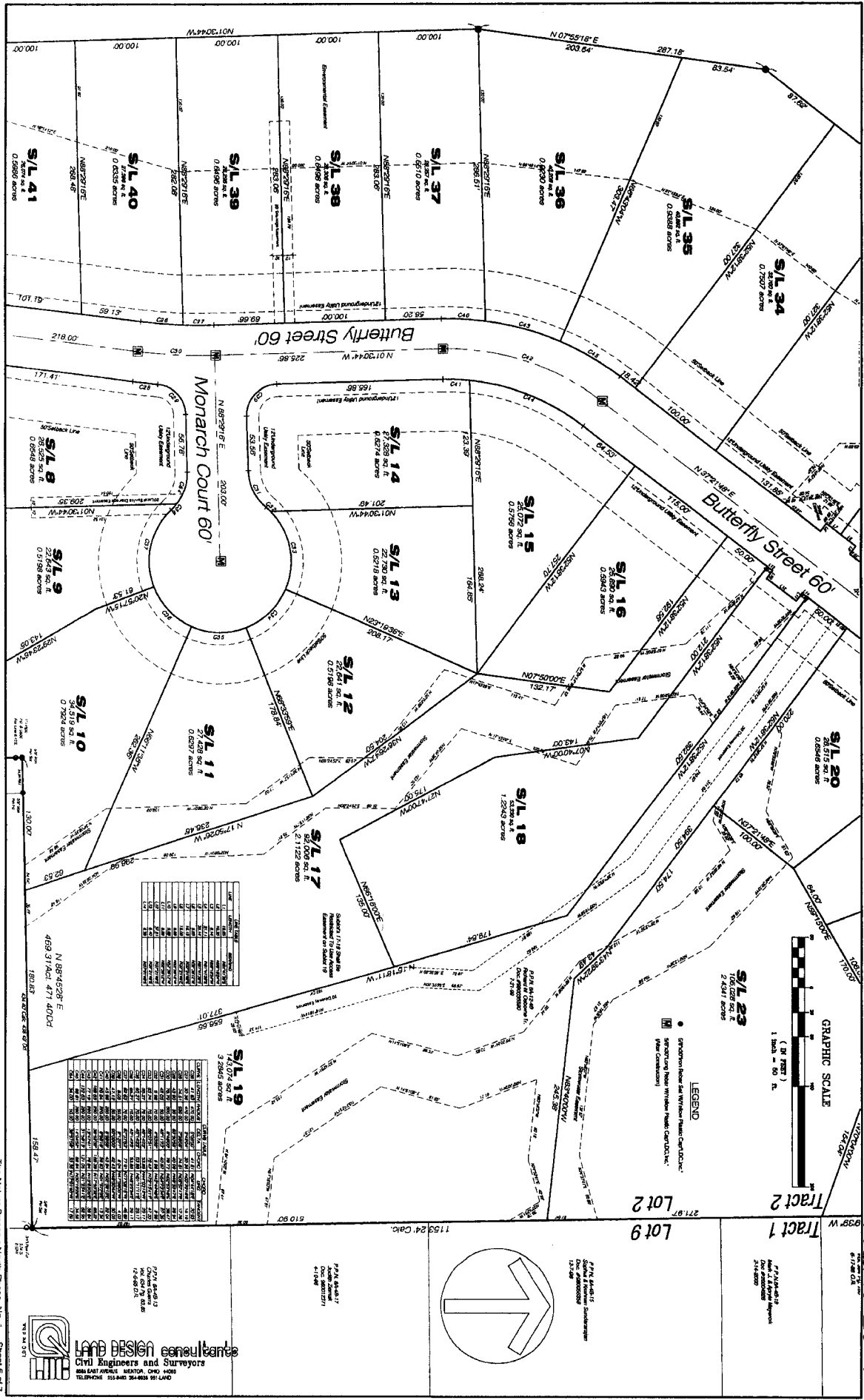
 101.48-26-2



CHARGE TABLE

CHARGE	LENGTH	POINTS	CHG. TA.	CHARGE	CHARGE	POINTS
C19	88.10	324.30	11.92007	S2.82	N071516'E	37.14
C20	48.81	404.30	6.95607	S2.82	N071516'E	37.14
C21	51.17	404.30	4.92071	S1.16	N007140'E	18.08
C22	38.11	530.00	4.0713	36.10	N073292'E	21.06
C23	42.25	530.00	4.0007	42.25	N073292'E	21.06
C24	78.79	500.00	6.0007	78.79	N073292'E	21.06
C25	41.83	470.00	5.02056	41.83	N044416'E	20.82
C26	41.83	470.00	5.02056	41.83	N044416'E	20.82
C27	90.56	470.00	5.4204	30.56	N0070716'E	12.85
C28	24.51	530.00	2.36056	24.51	N073292'E	12.85
C29	43.90	30.00	6.97007	40.92	N063347'E	28.94
C30	78.79	500.00	6.0007	78.79	N073292'E	21.06
C31	42.02	50.00	4.11123	42.02	N073292'E	21.06
C32	83.28	70.00	6.87051	78.42	N071516'E	47.93
C33	68.27	70.00	4.91423	53.85	N044416'E	20.82
C34	58.27	70.00	4.91423	53.85	N071171'E	29.17
C35	58.27	70.00	4.91423	53.85	N071171'E	29.17
C36	62.63	70.00	6.71757	77.91	N073292'E	48.69
C37	62.63	70.00	6.71757	77.91	N073292'E	48.69
C38	62.63	70.00	6.71757	77.91	N073292'E	48.69
C39	54.00	50.00	3.87056	43.58	N070149'W	17.69



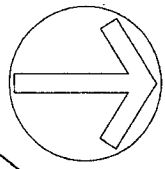
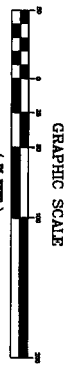


LEGEND
 • STATION POINT AND WITHIN RANGE CONTROL POINT
 □ STATION POINT WITHIN RANGE CONTROL POINT (FROM CONSTRUCTION)

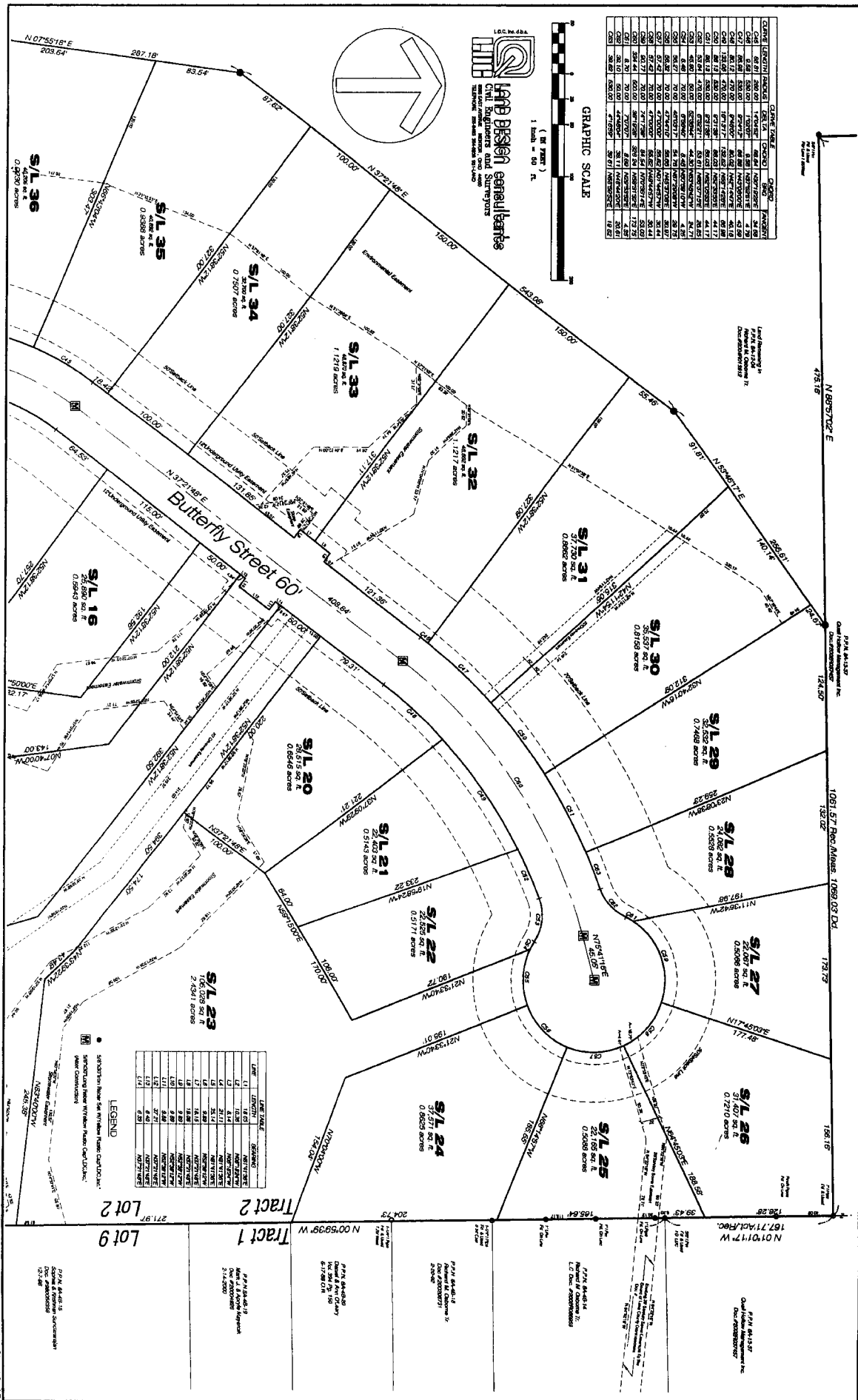
Lot	Area (sq. ft.)	Area (Acres)
S/L 1	27,428	0.6237
S/L 2	27,428	0.6237
S/L 3	27,428	0.6237
S/L 4	27,428	0.6237
S/L 5	27,428	0.6237
S/L 6	27,428	0.6237
S/L 7	27,428	0.6237
S/L 8	27,428	0.6237
S/L 9	27,428	0.6237
S/L 10	27,428	0.6237
S/L 11	27,428	0.6237
S/L 12	27,428	0.6237
S/L 13	27,428	0.6237
S/L 14	27,428	0.6237
S/L 15	27,428	0.6237
S/L 16	27,428	0.6237
S/L 17	27,428	0.6237
S/L 18	27,428	0.6237
S/L 19	27,428	0.6237
S/L 20	27,428	0.6237
S/L 21	27,428	0.6237
S/L 22	27,428	0.6237
S/L 23	27,428	0.6237
S/L 24	27,428	0.6237

Lot	Area (sq. ft.)	Area (Acres)
S/L 1	27,428	0.6237
S/L 2	27,428	0.6237
S/L 3	27,428	0.6237
S/L 4	27,428	0.6237
S/L 5	27,428	0.6237
S/L 6	27,428	0.6237
S/L 7	27,428	0.6237
S/L 8	27,428	0.6237
S/L 9	27,428	0.6237
S/L 10	27,428	0.6237
S/L 11	27,428	0.6237
S/L 12	27,428	0.6237
S/L 13	27,428	0.6237
S/L 14	27,428	0.6237
S/L 15	27,428	0.6237
S/L 16	27,428	0.6237
S/L 17	27,428	0.6237
S/L 18	27,428	0.6237
S/L 19	27,428	0.6237
S/L 20	27,428	0.6237
S/L 21	27,428	0.6237
S/L 22	27,428	0.6237
S/L 23	27,428	0.6237
S/L 24	27,428	0.6237

CLIMATE	LAND/USE	STATUS	AREA	ACRES	PERCENT
C14	RES	RES	1,000.00	1.0000	14.29
C15	RES	RES	1,000.00	1.0000	14.29
C16	RES	RES	1,000.00	1.0000	14.29
C17	RES	RES	1,000.00	1.0000	14.29
C18	RES	RES	1,000.00	1.0000	14.29
C19	RES	RES	1,000.00	1.0000	14.29
C20	RES	RES	1,000.00	1.0000	14.29
C21	RES	RES	1,000.00	1.0000	14.29
C22	RES	RES	1,000.00	1.0000	14.29
C23	RES	RES	1,000.00	1.0000	14.29
C24	RES	RES	1,000.00	1.0000	14.29
C25	RES	RES	1,000.00	1.0000	14.29
C26	RES	RES	1,000.00	1.0000	14.29
C27	RES	RES	1,000.00	1.0000	14.29
C28	RES	RES	1,000.00	1.0000	14.29
C29	RES	RES	1,000.00	1.0000	14.29
C30	RES	RES	1,000.00	1.0000	14.29
C31	RES	RES	1,000.00	1.0000	14.29
C32	RES	RES	1,000.00	1.0000	14.29
C33	RES	RES	1,000.00	1.0000	14.29
C34	RES	RES	1,000.00	1.0000	14.29
C35	RES	RES	1,000.00	1.0000	14.29
C36	RES	RES	1,000.00	1.0000	14.29
C37	RES	RES	1,000.00	1.0000	14.29
C38	RES	RES	1,000.00	1.0000	14.29
C39	RES	RES	1,000.00	1.0000	14.29
C40	RES	RES	1,000.00	1.0000	14.29
C41	RES	RES	1,000.00	1.0000	14.29
C42	RES	RES	1,000.00	1.0000	14.29
C43	RES	RES	1,000.00	1.0000	14.29
C44	RES	RES	1,000.00	1.0000	14.29
C45	RES	RES	1,000.00	1.0000	14.29
C46	RES	RES	1,000.00	1.0000	14.29
C47	RES	RES	1,000.00	1.0000	14.29
C48	RES	RES	1,000.00	1.0000	14.29
C49	RES	RES	1,000.00	1.0000	14.29
C50	RES	RES	1,000.00	1.0000	14.29
C51	RES	RES	1,000.00	1.0000	14.29
C52	RES	RES	1,000.00	1.0000	14.29
C53	RES	RES	1,000.00	1.0000	14.29
C54	RES	RES	1,000.00	1.0000	14.29
C55	RES	RES	1,000.00	1.0000	14.29
C56	RES	RES	1,000.00	1.0000	14.29
C57	RES	RES	1,000.00	1.0000	14.29
C58	RES	RES	1,000.00	1.0000	14.29
C59	RES	RES	1,000.00	1.0000	14.29
C60	RES	RES	1,000.00	1.0000	14.29
C61	RES	RES	1,000.00	1.0000	14.29
C62	RES	RES	1,000.00	1.0000	14.29
C63	RES	RES	1,000.00	1.0000	14.29
C64	RES	RES	1,000.00	1.0000	14.29
C65	RES	RES	1,000.00	1.0000	14.29
C66	RES	RES	1,000.00	1.0000	14.29
C67	RES	RES	1,000.00	1.0000	14.29
C68	RES	RES	1,000.00	1.0000	14.29
C69	RES	RES	1,000.00	1.0000	14.29
C70	RES	RES	1,000.00	1.0000	14.29
C71	RES	RES	1,000.00	1.0000	14.29
C72	RES	RES	1,000.00	1.0000	14.29
C73	RES	RES	1,000.00	1.0000	14.29
C74	RES	RES	1,000.00	1.0000	14.29
C75	RES	RES	1,000.00	1.0000	14.29
C76	RES	RES	1,000.00	1.0000	14.29
C77	RES	RES	1,000.00	1.0000	14.29
C78	RES	RES	1,000.00	1.0000	14.29
C79	RES	RES	1,000.00	1.0000	14.29
C80	RES	RES	1,000.00	1.0000	14.29
C81	RES	RES	1,000.00	1.0000	14.29
C82	RES	RES	1,000.00	1.0000	14.29
C83	RES	RES	1,000.00	1.0000	14.29
C84	RES	RES	1,000.00	1.0000	14.29
C85	RES	RES	1,000.00	1.0000	14.29
C86	RES	RES	1,000.00	1.0000	14.29
C87	RES	RES	1,000.00	1.0000	14.29
C88	RES	RES	1,000.00	1.0000	14.29
C89	RES	RES	1,000.00	1.0000	14.29
C90	RES	RES	1,000.00	1.0000	14.29
C91	RES	RES	1,000.00	1.0000	14.29
C92	RES	RES	1,000.00	1.0000	14.29
C93	RES	RES	1,000.00	1.0000	14.29
C94	RES	RES	1,000.00	1.0000	14.29
C95	RES	RES	1,000.00	1.0000	14.29
C96	RES	RES	1,000.00	1.0000	14.29
C97	RES	RES	1,000.00	1.0000	14.29
C98	RES	RES	1,000.00	1.0000	14.29
C99	RES	RES	1,000.00	1.0000	14.29
C100	RES	RES	1,000.00	1.0000	14.29

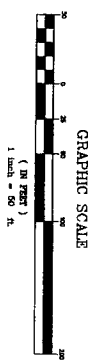
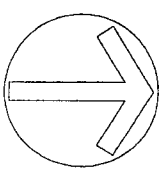
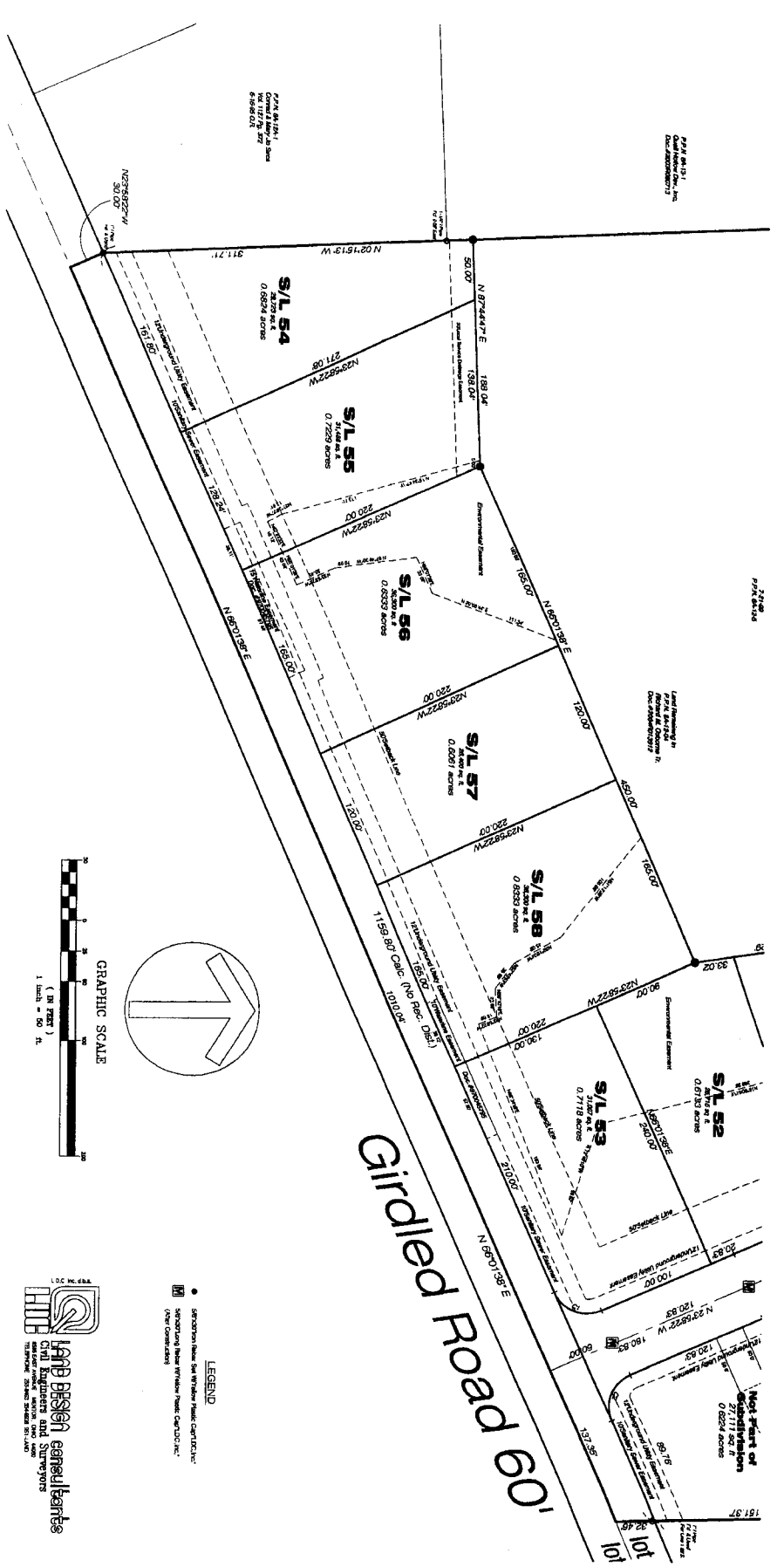


LAND DESIGN CONSULTANTS
 10000 W. 11th Avenue, Suite 200
 Golden, CO 80401
 303.440.1111
 www.landdesign.com



LOT	AREA	ACRES
16	25,580	0.5858
17	25,580	0.5858
18	25,580	0.5858
19	25,580	0.5858
20	25,580	0.5858
21	25,580	0.5858
22	25,580	0.5858
23	25,580	0.5858
24	25,580	0.5858
25	25,580	0.5858
26	25,580	0.5858
27	25,580	0.5858
28	25,580	0.5858
29	25,580	0.5858
30	25,580	0.5858
31	25,580	0.5858
32	25,580	0.5858
33	25,580	0.5858
34	25,580	0.5858
35	25,580	0.5858
36	25,580	0.5858

LEGEND
 Symbols for various easements and features as defined in the plan.



LEGEND

- SECTION LINE BY WILSON TRUCK CENTER, INC.
- SECTION LINE BY WILSON TRUCK CENTER, INC. (NEW CONSTRUCTION)

LAND DESIGN CONSULTANTS
 Civil Engineers and Surveyors
 1000 N. 10th St., Suite 100
 Fargo, ND 58102
 (701) 785-1111
 www.landdesign.com